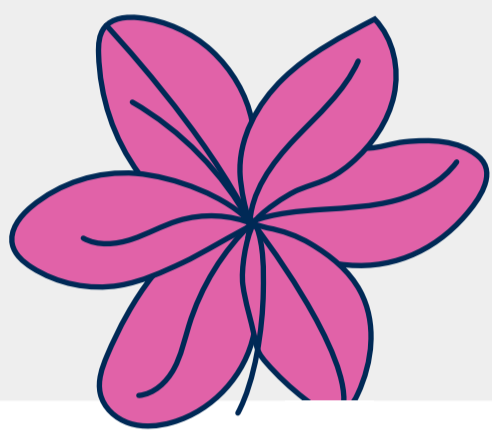


# 18 houseplants **toxic to cats**

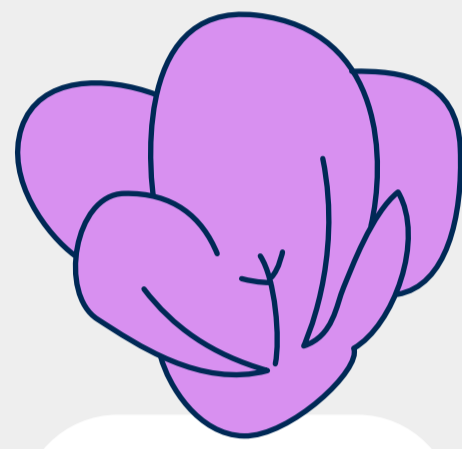
Unsure which plants are poisonous to cats?



These common household plants are the most toxic.



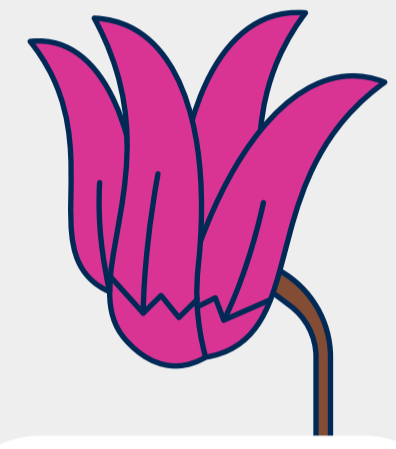
Autumn Crocus



Azaleas



Chrysanthemum



Cyclamen



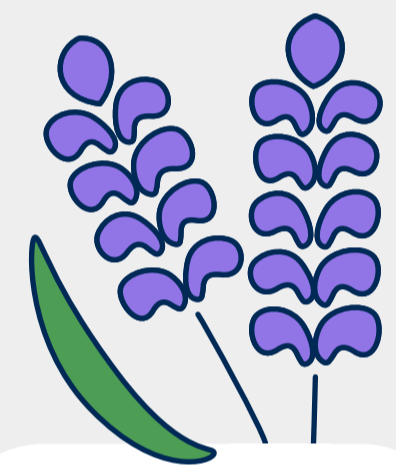
Daffodils



Dieffenbachia



English Ivy



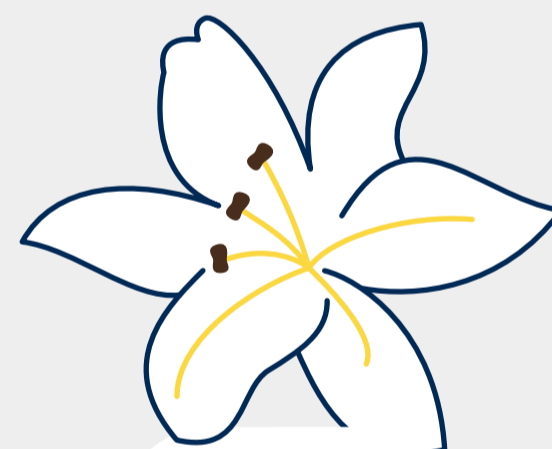
Hyacinths



Jade Plant



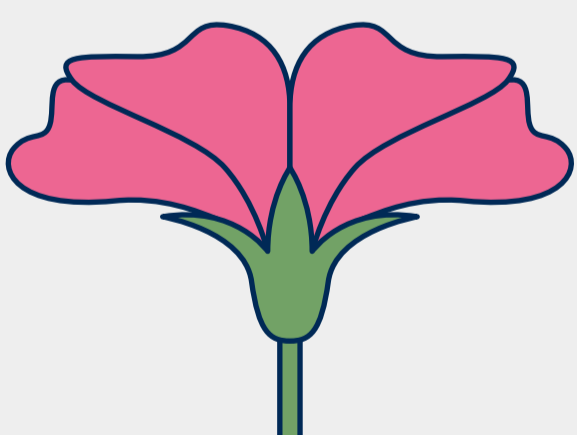
Kalanchoe



Lilies



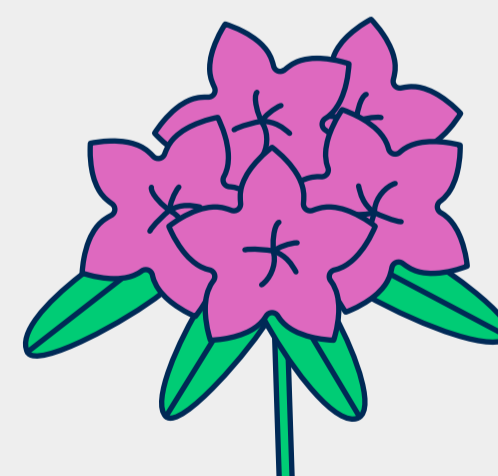
Monstera



Oleander



Pothos



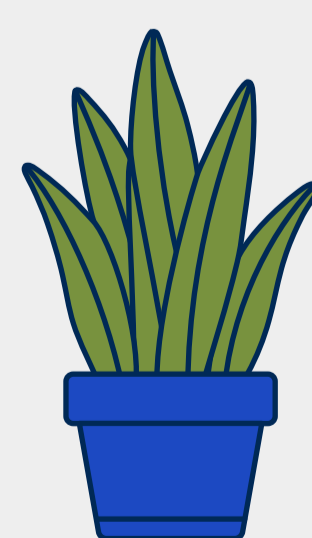
Rhododendron



Sago Palm

**chewy**

If your cat ingests anything toxic, including poisonous plants, immediately call your veterinarian or the Pet Poison Helpline® at 855-764-7661.



Snake Plant



Tulips